

# V Line Pleated Panel Filter Economy Standard



## General Description

The V Line pleated Panel filter is a standard capacity disposable product offering a better than basic level of filtration, or pre-filtration in HEVAC applications. This product is made using patented Kimberly Clark media which delivers a constant level of filtration over its life.

## Construction

This product is constructed by bonding a pleat pack of Intrepid V Line media into a water repellent AquaKote card frame



## Features

The Frame is made from AquaKote card which has

- Superior tear resistance when wet
- Great dry tear resistance and
- Manufactured from a renewable source.

## Kimberley Clark Patented Intrepid Media

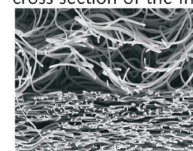
- Has a Graduated Density for even dirt loading , resulting in greater dust holding
- Hydrophobic – so will not load with moisture in the air
- Has a constant efficiency due to its extra electrostatic charge
- Superior Efficiency V's Particle size (see table)
- Has a low pressure drop
- Is made form continuous fibres so will not shed

Test Comparing Filtration efficiency V's different sized particles. Intrepid Media V's Cotton Polyester Filters

Particle Size Rang(mm)	Initial Fractional Efficiency(%)	
	V Line Intrepid	The "best" Cotton Poly Alternative
0.3-0.4	7	2
0.4-0.55	15	6
0.55-0.7	28	11
0.7-1.0	41	19
1.0-1.3	52	24
1.3-1.6	58	28
1.6-2.2	63	32
2.2-3.0	67	36
3.0-4.0	70	37
4.0-5.5	71	38
5.5-7.0	72	38
7.0-10.0	73	39

Filter Efficiency to BS EN 779		<b>G4</b>
Rating to ASHRAE 52.2 Test Standard		<b>Merv 8</b>
Filter Thickness	Rated Airflow	Initial Pressure Drop
20mm	1.5m/sec	60Pa
45mm	2.0m/sec	62Pa
95mm	2.5m/sec	80Pa
Final Recommended Pressure Drop		<b>250Pa</b>

Hi Magnification photo showing the cross section of the Intrepid media

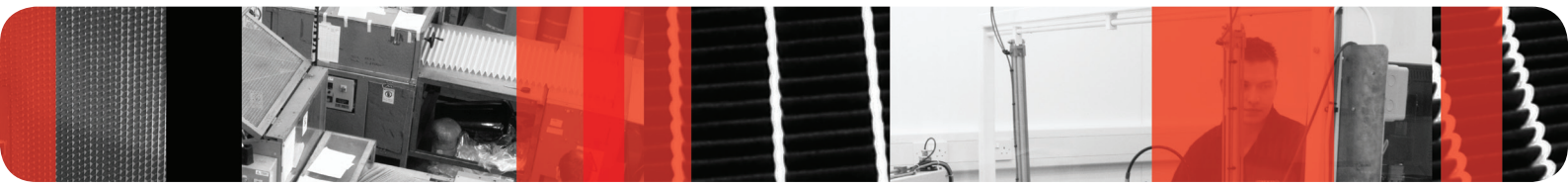


Coarse  
↓ Airflow  
Fine

**Designed in Britain, Made in Britain**



# V Line Panel Filter (VL) STANDARD SIZES

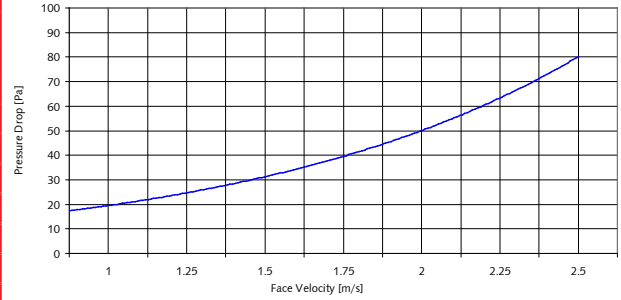


No.	Nominal Size Inches	Height (mm)	Width (mm)	Depth (mm)	Rated Airflow m <sup>3</sup> /hr
VL4-1010	10x10x4	241	241	95	544
VL4-1020	10x20x4	241	495	95	1117
VL4-1212	12x12x4	292	292	95	798
VL4-1224	12x24x4	292	594	95	1623
VL4-1515	15x15x4	368	368	95	1268
VL4-1520	15x20x4	368	495	95	1705
VL4-1616	16x16x4	394	394	95	1453
VL4-1620	16x20x4	394	495	95	1825
VL4-1625	16x25x4	394	622	95	2294
VL4-1818	18x18x4	445	445	95	1854
VL4-1831	18x31x4	445	775	95	3228
VL4-2020	20x20x4	495	495	95	2293
VL4-2024	20x24x4	495	594	95	2752
VL4-2025	20x25x4	495	622	95	2882
VL4-2424	24x24x4	594	594	95	3303

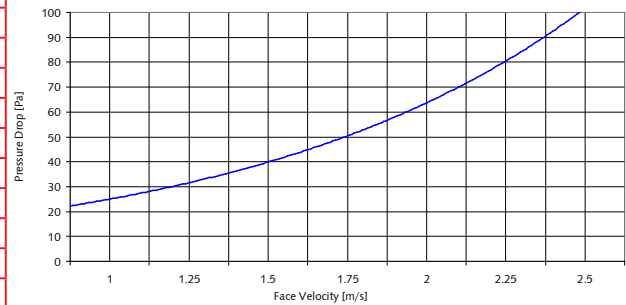
No.	Nominal Size Inches	Height (mm)	Width (mm)	Depth (mm)	Rated Airflow m <sup>3</sup> /hr
VL2-1010	10x10x2	241	241	45	418
VL2-1020	10x20x2	241	495	45	859
VL2-1212	12x12x2	292	292	45	614
VL2-1224	12x24x2	292	594	45	1249
VL2-1515	15x15x2	368	368	45	975
VL2-1520	15x20x2	368	495	45	1312
VL2-1619	16x19x2	394	470	45	1333
VL2-1620	16x20x2	394	495	45	1404
VL2-1624	16x24x2	394	594	45	1685
VL2-1625	16x25x2	394	622	45	1764
VL2-1818	18x18x2	445	445	45	1426
VL2-1820	18x20x2	445	495	45	1586
VL2-1824	18x24x2	445	594	45	1903
VL2-2020	20x20x2	495	495	45	1764
VL2-2024	20x24x2	495	594	45	2117
VL2-2025	20x25x2	495	622	45	2217
VL2-2424	24x24x2	594	594	45	2540

No.	Nominal Size Inches	Height (mm)	Width (mm)	Depth (mm)	Rated Airflow m <sup>3</sup> /hr
VL1-1010	10x10x1	241	241	20	314
VL1-1020	10x20x1	241	495	20	644
VL1-1212	12x12x1	292	292	20	460
VL1-1224	12x24x1	292	594	20	937
VL1-1515	15x15x1	368	368	20	731
VL1-1520	15x20x1	368	495	20	984
VL1-1619	16x19x1	394	470	20	1000
VL1-1620	16x20x1	394	495	20	1053
VL1-1624	16x24x1	394	594	20	1264
VL1-1625	16x25x1	394	622	20	1323
VL1-1818	18x18x1	445	445	20	1069
VL1-1820	18x20x1	445	495	20	1189
VL1-1824	18x24x1	445	594	20	1427
VL1-2020	20x20x1	495	495	20	1323
VL1-2024	20x24x1	495	594	20	1588
VL1-2025	20x25x1	495	622	20	1663
VL1-2424	24x24x1	594	594	20	1905

Pressure Drop vs/ Face Velocity  
V Line VL4 Panel Filter 95mm Thick



Pressure Drop vs/ Face Velocity  
V Line VL2 Panel Filter 45mm Thick



Pressure Drop vs/ Face Velocity  
Vline VL1 Panel Filter 20mm Thick

