

M7 Pleated Panel Filter ENERGYSAVER



General Description

The EnergySaver panel filter is a disposable product offering a basic level of filtration, or pre-filtration in HEVAC applications. This product is made using patented Kimberly Clark media which combined in the unique way Jasun Filtration construct the filter can offer energy savings of up to 40%. With this product you will also reduce your carbon foot print.



Construction

This product is constructed by bonding a pleat pack of G Line media into a water repellent AquaKote card frame

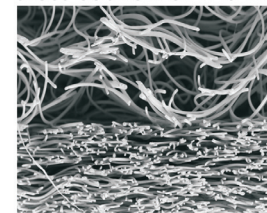


Kimberley Clark Patented Intrepid Media

- Has a Graduated Density for even dirt loading , resulting in greater dust holding
- Hydrophobic – so will not load with moisture in the air
- Has a constant efficiency due to its extra electrostatic charge
- Superior Efficiency V's Particle size (see table)
- Has a low pressure drop
- Is made form continuous fibres so will not shed
- Hugely extended area results in long life



cross section of the Intrepid media



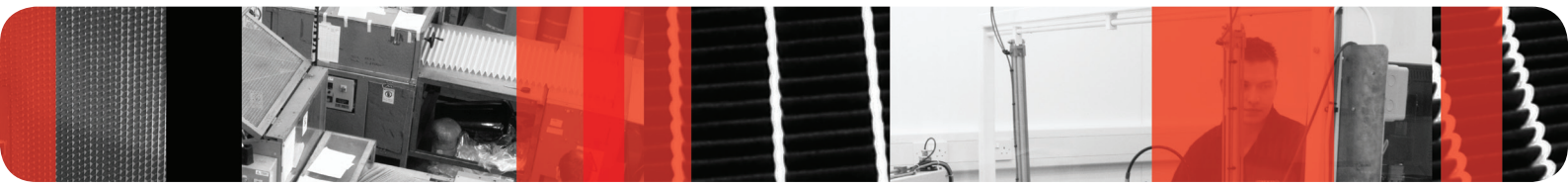
Coarse
↓ Airflow
Fine

Filter Efficiency to BS EN 779		G4
Rating to ASHRAE 52.2 Test Standard		Merv 7
Filter Thickness	Rated Airflow	Initial Pressure Drop
20mm	1.5m/sec	34Pa
45mm	2.5m/sec	38Pa
95mm	2.5m/sec	35Pa
Final Recommended Pressure Drop		200Pa

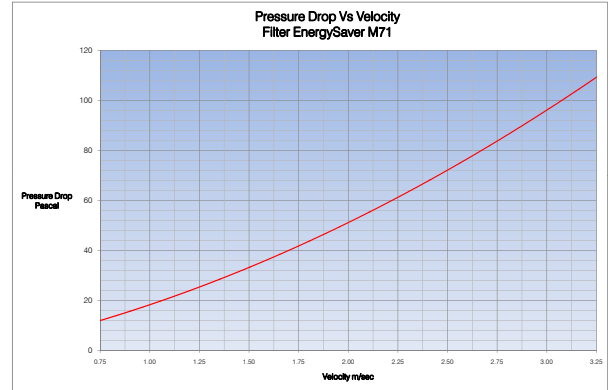
Designed in Britain, Made in Britain



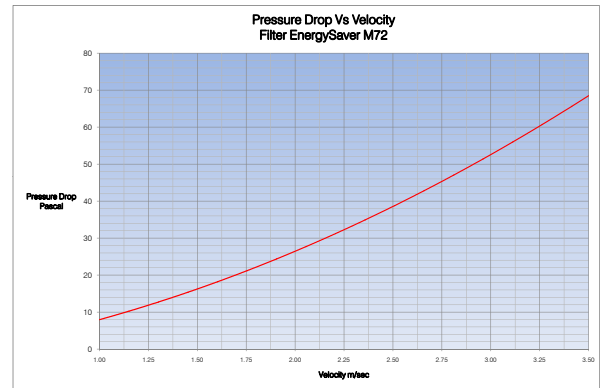
EnergySaver Panel Filter (M7) STANDARD SIZES



No.	Nominal Size Inches	Height (mm)	Width (mm)	Depth (mm)	Rated Airflow m ³ /hr
M74-1010	10x10x4	241	241	95	544
M74-1020	10x20x4	241	495	95	1117
M74-1212	12x12x4	292	292	95	798
M74-1224	12x24x4	292	594	95	1623
M74-1515	15x15x4	368	368	95	1268
M74-1520	15x20x4	368	495	95	1705
M74-1616	16x16x4	394	394	95	1453
M74-1620	16x20x4	394	495	95	1825
M74-1625	16x25x4	394	622	95	2294
M74-1818	18x18x4	445	445	95	1854
M74-1831	18x31x4	445	775	95	3228
M74-2020	20x20x4	495	495	95	2293
M74-2024	20x24x4	495	594	95	2752
M74-2025	20x25x4	495	622	95	2882
M74-2424	24x24x4	594	594	95	3400



No.	Nominal Size Inches	Height (mm)	Width (mm)	Depth (mm)	Rated Airflow m ³ /hr
M72-1010	10x10x2	241	241	45	544
M72-1020	10x20x2	241	495	45	1117
M72-1212	12x12x2	292	292	45	798
M72-1224	12x24x2	292	594	45	1623
M72-1515	15x15x2	368	368	45	1268
M72-1520	15x20x2	368	495	45	1705
M72-1619	16x19x2	394	470	45	1453
M72-1620	16x20x2	394	495	45	1825
M72-1624	16x24x2	394	594	45	2294
M72-1625	16x25x2	394	622	45	1854
M72-1818	18x18x2	445	445	45	3228
M72-1820	18x20x2	445	495	45	2293
M72-1824	18x24x2	445	594	45	2752
M72-2020	20x20x2	495	495	45	2882
M72-2024	20x24x2	495	594	45	3303
M72-2025	20x25x2	495	622	45	2217
M72-2424	24x24x2	594	594	45	3400



No.	Nominal Size Inches	Height (mm)	Width (mm)	Depth (mm)	Rated Airflow m ³ /hr
M71-1010	10x10x1	241	241	20	314
M71-1020	10x20x1	241	495	20	644
M71-1212	12x12x1	292	292	20	460
M71-1224	12x24x1	292	594	20	937
M71-1515	15x15x1	368	368	20	731
M71-1520	15x20x1	368	495	20	984
M71-1619	16x19x1	394	470	20	1000
M71-1620	16x20x1	394	495	20	1053
M71-1624	16x24x1	394	594	20	1264
M71-1625	16x25x1	394	622	20	1323
M71-1818	18x18x1	445	445	20	1069
M71-1820	18x20x1	445	495	20	1189
M71-1824	18x24x1	445	594	20	1427
M71-2020	20x20x1	495	495	20	1323
M71-2024	20x24x1	495	594	20	1588
M71-2025	20x25x1	495	622	20	1663
M71-2424	24x24x1	594	594	20	1905

